



To provide a safe-haven as an alternative  
to incarceration for chronic homeless mentally ill  
adults and females at risk of violent crimes

**J. Lynnelle Williams, M.P.A.**  
**Chief Executive Officer**  
**Founder**

March 25, 2014

**Board of Directors:**

*George Armstrong*  
**Board Chair**  
*Bernelle Williams*  
**Co-Chair**  
*Michelle Downey-Lawyer,*  
**Treasurer**  
*Julie Woodward,*  
**Secretary**  
*Officer Bob Casey*  
*SBPD Restorative Police*  
*Retired*  
*Joanna Reyes*  
*Business Owner*  
*Marjorie Brandon*  
*Resident Representative*

**Advisory Board:**

*Camerino "Cam" Sanchez*  
*Chief of Police*  
*Santa Barbara*  
*Mrs. Nancy Alexander*  
*Retired*  
*Mr. John Flick*  
*Retired*  
*Mrs. Lois Flick*  
*Registered Nurse*  
*Retired*  
*Bessie Murphy*  
*Judicial Assistant*  
*Ms. Gail Rappaport*  
*Lawyer/Mediator*  
*Mrs. Beverly Wallace*  
*Teacher, Retired*  
*Mr. Ken Williams*  
*Outreach Worker*  
*Mr. Quinton Williams*  
*Engineer*  
*Retired*  
*Andrew Woodard*  
*Business Owner*

Ms. Debbie McCloud  
Executive Director  
St. Francis Foundation of Santa Barbara  
2323 De La Vina, Suite 104  
Santa Barbara, CA 93105

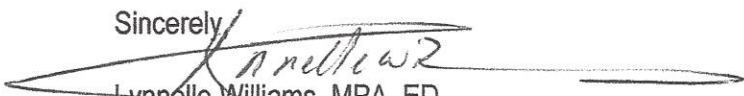
Dear Ms. McCloud,

We are very grateful for the previous support WillBridge has received from the St. Francis Foundation. Respectfully WillBridge is submitting a new request of \$20,000 for general operating support. A grant from the St. Francis Foundation would allow us to continue to provide supportive housing and other services to Santa Barbara's chronically homeless, mentally ill adults.

WillBridge works to fulfill its mission to end suffering by providing safe-haven housing for Santa Barbara's chronically homeless mentally ill, offering them a long-term, supportive alternative to living on the streets. We provide a continuum of care, including street outreach, transitional & supportive housing and medical respite.

We hope the St. Francis Foundation of Santa Barbara will partner with us once again, during a time when homelessness has become an unfortunate struggle for so many individuals. As requested, please find enclosed the Common grant Application, proposal narrative and other supporting documents. If you have any questions or would like additional information, please call me at (805)-564-1911 or email me at [lynnelle@willbridge.sbcoxmail.com](mailto:lynnelle@willbridge.sbcoxmail.com).

Sincerely,

  
Lynnelle Williams, MPA, ED

2904 State Street, Suite "A" --- Santa Barbara, CA 93105

Office: (805) 564-1911 Fax: (805) 564-1933

Email: [opportunity@willbridge.sbcoxmail.com](mailto:opportunity@willbridge.sbcoxmail.com) - Website: [www.willbridgesb.org](http://www.willbridgesb.org)

# The Foundation Roundtable: Common Grant Application

## Cover Sheet

Foundation you are applying to: St Francis Foundation  
Legal Name of Applicant Organization: WillBridge of Santa Barbara, Inc.  
Project Name (if applicable): S/A  
Funds will pay for: Operating Expenses  
Full Mailing Address: 2904 State Street, Suite A - Santa Barbara, CA 93105  
Location(s) if different from above: \_\_\_\_\_  
Executive Director: Lynnelle Williams, MPA  
Phone: 805-564-1911 Fax: 805-564-1933  
Email: lynnelle@willbridge.sbcoxmail.com Website: www.willbridgesb.org  
Contact Person & Title: LynnelleWilliams Phone: 805-564-1911

Tax-exempt Status:(Most foundations require 501(c)(3) status. You must check this requirement before applying.)

501(c)(3) Granted ☒ Tax I.D. Number: 57-1194-195 Other: \_\_\_\_\_

**Type of Request:** *Check with individual foundations to determine the types of accepted grant requests.*

General Support ☒ Program Support ☐ Seed Funding ☐ Research ☐  
Capital ☐ Endowment ☐ Multi-Year ☐ Other: \_\_\_\_\_

This Grant Request: \$ \$20,000 Total Project Budget: \$404,685

Grant Period from: 7/1/2014 To: 6/30/2015

Total Organizational Budget for Current Year: \$404,685 Fiscal year begins: 1/1/2014

Summarize the organization's mission statement (two to three sentences):


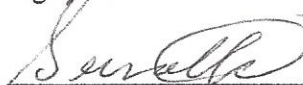
WillBridge works to fulfill its mission to end suffering by providing safe-haven housing for Santa Barbara's chronic homeless mentally ill, offering them long-term, supportive alternative to living on the streets. WillBridge provides a continuum of care to homeless, mentally ill adults, including street outreach, transitional and supportive housing.

Summarize your grant request (two to three sentences):

We are extremely grateful for the St. Francis Foundation's ongoing support since 2006. This year, WillBridge is requesting a gift of \$20,000 for general support. WillBridge provides supportive housing and other services to the hardest and most difficult-to-reach individuals in all Santa Barbara - chronic homeless, mentally ill adults.

### Proposal Authorization

We certify that the information in this application is to the best of our knowledge true and accurate and is submitted with our Board of Directors'/Governing Body's full knowledge and endorsement:

	<u>George Armstrong - Chair</u>	<u>3/31/14</u>
Signature	Name & Title of Authorized Board/Governing Body Representative	Date
	<u>Bernelle Williams - Co _Chair</u>	<u>3-31-14</u>
Signature	Name & Title of Authorized Board/Governing Body Representative	Date



## WillBridge of Santa Barbara, Inc. Proposal Narrative

### Background (One page or less)

#### 1. Your organization's history and accomplishments

WillBridge is a faith-based organization that provides a continuum of care to chronic homeless, mentally ill adults. Founded in 2003, WillBridge functions as an alternative to incarceration by helping clients reach stability in a nurturing environment; assists law enforcement and emergency personnel by decreasing time and effort spent with the population; saves thousands of dollars in jail and hospital expenses. As of December 2013, WillBridge provided 9 years of direct services to 387 residents who are considered "hard to reach" with severe mental illness. Of these individuals, 217 had successful outcomes of moving on to independent living, board & care facilities; residential programs; permanent supportive housing; family reunification; or relocation to other communities or states. During 2013 the street outreach team had 2176 contacts of which 243 were unduplicated 10 outreach clients became WillBridge residents.

#### 2. Your current program and activities

WillBridge provides four primary services to the Santa Barbara community: Transitional Housing is shared housing offered to adults who are chronically homeless mentally ill. Referrals are accepted from SBPD Restorative Policing and Restorative Homeless Court, SB County Probation / Parole Department, SB County Psychiatric Health Facilities & Vista Del Mar, SB County Jail, and Alcohol, Drug and Mental Health Services. In Mission Street Home, individuals adjust to a more stable life by becoming medication compliant as they prepare to transition into a residential program, an independent living situation, permanent supportive housing or relocate to another community the five bedroom house accommodates 5 men and 7 women. Permanent Supportive Housing the next tier in WillBridge's housing program for residents that have demonstrated their readiness for less supervision and more independence. These individuals move into private rooms or studio units. Are enrolled in school, employed or actively participating in a day program and 30% of their income goes towards housing expenses. WillBridge has two facilities (1) Park Place a seven-bedroom home that accommodates 6 residents & 2 medical respite referrals; (2) State Street Suites has 7 studio units and one managers apartment. Each facility has onsite resident managers with daytime support staff and case management services. Referrals are accepted from New Beginnings Counseling Safe Parking, transitional housing programs or emergency shelters. Street Outreach Program - WillBridge responded to a "Call to Action" when Casa Esperanza ended its homeless lunch program. We increased our street outreach from one day to three days a week (Tuesday, Wednesday, and Thursday). The outreach team was averaging 35 contacts weekly with the additional days the numbers have increased to 65-75 homeless individuals. Clients receive clothing, hygiene products, lunches, assistance with completing applications for benefits, transportation to scheduled appointment, referrals, and encouragement to come to WillBridge or consider other housing options. Medical Respite - are homeless individuals referred by Cottage Hospital or the Cancer Center for after care following a major surgery or illness. In addition, WillBridge will host its 7<sup>th</sup> Annual Homeless Foot Washing on April 17<sup>th</sup>, 2014. Homeless individuals are treated to a gentle foot washing, receive ne sneaker, hiking/work boots or sandals, socks, a continental breakfast, sack lunch and personal hygiene kit. Last year a total of 280 homeless individuals participated.

#### 3. Your Organizations relationships – both formal and informal

WillBridge is part of the Restorative Policing Task the SBPD, SB County Alcohol Drug and mental health Service (ADMHS), Public Defenders office, SB County Public Health Department, and the Homeless Coalition Team with goals of establishing treatment plans as an alternative to incarceration; alerting members when a client is in crisis or missing; and sharing positive accomplishments. We also collaborate with Cottage Hospital, providing 3 recuperative beds for homeless individuals. ADMHS funds 9 beds (funded an



additional bed January 2014) for their hardest to place clients The Housing Authority of the City of Santa Barbara subsidizes housing expenses for the residents living at Park Place and the Housing and Urban Development (HUD) provides subsidized housing for residents residing at State Street Suites. SB County Probation Department fund beds for their clients participating in the Early Release Program (AB109). WillBridge is the only organization offering transitional supportive services in Santa Barbara. Local shelters are temporary and do not cater to the mentally ill.

## **Funding Request**

### **1. What need or problem does your project work to address?**

According to Santa Barbara County's "ten Year Plan to End Homelessness", an estimated 6,900 individuals experience homelessness each year in Santa Barbara County. About 945 (13%-15%) are chronically homeless with mental health disorders. These individuals consume between 50%-65% of all the resources directed at aiding homeless people which equated to approximately \$18 million annually as reported by "Bringing Santa Barbara County Home." Furthermore, "Common Ground Santa Barbara" completed a survey during the week of January 22<sup>nd</sup> & 23<sup>rd</sup>, 2013 with results indicating that 866 individuals were identified as chronically homeless with high-mortality risk and the most vulnerable of the homeless population (2014 results not posted). These individuals routinely do not access shelter services and instead, live in neighborhoods, alleys, parks, and beaches on the south coast. These are the individuals WillBridge embraces.

WillBridge of Santa Barbara is the only organization of its kind that specifically targets homeless mentally ill adults. WillBridge serves as an alternative to incarceration and helps clients reach stability in a nurturing environment; assists law enforcement and emergency personnel by decreasing time and effort spent with this population; and saves thousands of dollars in jail and hospital expenses.

Ordinary daily tasks for the average person go unnoticed, but these tasks are anything but ordinary for WillBridge's chronically homeless mentally ill clients. WillBridge staff slowly and patiently gain the trust of this wary, distant and destitute population that is also severely mentally ill. These individuals don't remember what it is like to live indoors as they have been on the streets for so many years.

**2. In a short paragraph, tell us your organization's project's goals and specific outcomes for the grant period.** (i.e. numbers served, behavior or attitudes changed, capital project completed, etc.) Each small step taken by a chronically homeless mentally ill individual can be the beginning of their end of homelessness. In other words, a simple act, such as accepting a pair of warm socks or sharing a meal at a table, may raise the level of self-awareness needed to acquire a new perspective on life. Positive choices often follow with individuals finally accepting a life indoors. Thus, WillBridge gauges success through seemingly minor individual improvements (such as developing daily routines of personal hygiene; lengthening the time between relapses; attending City College or Adult Education Classes; medication compliance; becoming employed) and successful transitions out of the program. In addition, the following objectives will be used as outcome measures in serving the community:

1. Provide medical respite beds for 10 homeless clients per year discharged from Cottage Hospital (including securing identification documents, reconnecting to services, and assisting with applying for financial benefits (SSI/SSDI/GR/VA/etc.)
2. Provide emergency placement for 15 female residents annually
3. Transition 15 residents annually to long-term residential programs, Permanent Supportive Housing, Independent Living or family reunification/relocation

### **3. Describe your program or capital items requested.**

WillBridge staff first connects with clients through outreach, or by way of referrals from collaborating agencies. Individuals living on the streets can take up to 8 months or more of gentle coaxing before agreeing to come to WillBridge (many never accept assistance). Once in transitional housing, residents make great progress with little pressure and a low demand style, allowing them to choose their own level of help when they are ready. This success is measured by the seemingly small steps of: brushing their teeth; remembering to take their medications; showering daily; sitting at a table and eating with utensils; and washing their clothes.



Once daily tasks become routine, WillBridge's clients become closer to the ultimate goal of a stabilized life in our Permanent Supportive Housing Program or in other housing situations.

Demographic and Program Information:

**Street Outreach** – homeless, mentally ill individuals living in south Santa Barbara County (Santa Barbara, Carpinteria, Montecito, Summerland & Goleta) receive weekly ongoing interactions to evaluate wellbeing and to encourage accepting housing by two outreach teams (each consisting of a Case Manager and a former or current WillBridge resident) dispatched to homeless dwellings. Currently, WillBridge is the only organization providing homeless outreach to adults (Noah's Anchorage provides outreach to homeless teen and young adults). By routinely visiting the same locations at the same time, outreach workers begin to track progress by noting which individuals are purposely showing up to see them. WillBridge increased its street outreach days from one day to three days when Casa Esperanza ended its lunch program. WillBridge street outreach team provides direct services Tuesday, Wednesday and Thursday. In 2013 the outreach team had 2,176 units of service of which 243 were new contacts 10 outreach clients became WillBridge residents. The annual outreach goal is for eight clients to be admitted to WillBridge or another residential program. **Transitional Housing** – Individuals who are 20 years old or older, are mentally ill and chronically homeless in the south Santa Barbara County area are eligible. Case Managers track and chart individual progress on a monthly basis by noting when residents no longer need prompts to complete daily routines; self-initiate by asking for what they need; begin discussing short-term goals; and/or want to be connected to their families. Weekly individual meetings are held with staff and with other interested parties (i.e. parole, probation, doctor, family member, etc.). An individual case plan is then discussed and formalized. In 2013, 57 transitional housing residents were housed and continued to accept assistance that kept them off the streets. **Permanent Supportive Housing** - WillBridge has two permanent supportive housing facilities, "State Street Suites" with seven studio units and one manager's apartment. "Park Place," houses six coed residents with single-room occupancy. Residents must be deemed 'ready' by WillBridge or a collaborator for this minimally supervised and more independent living situation. Stable residents enjoy greater independence with some daytime support staff and case management services in exchange for maintaining their living space and contributing a program fee. All residents must remain medically compliant and be employed or attend school. This is usually a stepping-stone for individuals who want complete independence, although residents who continue to be medication compliant can remain with no limitations on their stay.

WillBridge is committed to being a part of the solution to end homelessness and cost a fraction of jail, emergency room, or law enforcement time. In 2013, twenty one residents made great progress with 3 entering permanent supportive housing, 8 to independent living, 7 to residential treatment programs, 3 relocations to another community and 11 referrals for medical respite. In all 77 clients were assisted with 8,676 units of service or bed nights.

**4. If this is a request for general support, what are your organization's most pressing needs?**

Over the last year, WillBridge has continued to maintain a strong infrastructure and operations through generous general support gifts from the St. Francis Foundation and many others. With respect for the St. Francis Foundation's previous support, WillBridge is requesting a grant of \$20,000 to assist with our most pressing needs of: offsetting transitional housing expenses for residents whose government benefits are pending (\$5,000); Staff salaries for: Social Media Coordinator, Administration Assistant, and Program Coordinator (\$12,000); and general operating supplies (\$3,000). WillBridge is a crucial part of 'Santa Barbara's Ten-Year Plan to End Homelessness' by being the first contact many homeless individuals make towards the continuum of care to get them off the streets. The success of an individual's initial break from homelessness is imperative in them continuing with housing options and treatment.

**5. How do you plan to evaluate the effectiveness or impact of the project?**

WillBridge's Board and Executive Director will meet quarterly regarding the impact of the grant to measure and evaluate program effectiveness. The main measure is to track engagement activities to identify if more residents are staying off the streets and in housing. During the coming year, WillBridge will engage its clients more effectively so they gain a greater sense of purpose that keeps them off the streets longer and makes Santa Barbara's individuals, families, children and neighborhoods safer as verified by case management,



documentation and charting of each resident's specific milestones. WillBridge will achieve its resident engagement outcome by one-on-one mentoring, establishing accountability based on the Individualized Case Plan created by the client, and providing structure to its day program through field trips and on-site activities. Finally, *Melissa Cervantes Ph.D., of Antioch University, "...conducted a quantitative study of WillBridge to determine the overall effectiveness of homeless housing programs (Transitional & Permanent Supportive Housing) in increasing the income, life skills and residency of clients and the impact of specific program activities on meeting program goals. The results of the findings indicated that over half of the clients, 53.8% in the study who exited from WillBridge obtained residency in independent housing, permanent supportive housing, long-term residential treatment, or with a family members. Of those clients who obtained residency, almost three-quarters (71.4%) transitioned into independent living, acquiring an individual lease or permanent supportive housing upon exiting from WillBridge."* (*Bringing Hope To Those Forgotten: Quantitative Analysis of WillBridge of Santa Barbara, Inc.*) [www.obiolink.edu/etd](http://www.obiolink.edu/etd)

**6. Summarize the skills and relevant experience of key staff/volunteers essential to your organization's or the program's success. If your organization is collaborating with other organizations, note which ones and in what ways.**

Lynnelle Williams, Executive Director - earned her Bachelor's degree in Psychology and a Masters in Public Administration (MPA). Lynnelle has worked with the homeless since 1988. Her experience include eight years as Director of the Salvation Army Hospitality House in SB, eight years as House Manager and Assistant Director of Social Services the Salvation Army U N Women's Shelter in New York City, one year as Case Manager with East 3<sup>rd</sup> Street Family Shelter in New York City and three years with Child Welfare Administration, also in New York City.

Crystle Murphy, Program Coordinator - has 9 years' experience as a Program Coordinator and working with the homeless population. Targeted training has been Case Management, First Aid & CPR, Drug Testing, Supervision and Client Advocacy with Santa Barbara Courts. Crystle was employed with the Salvation Army Hospitality House as Program Coordinator and was involved with the startup of WillBridge acting as House Manager.

Louie Perez, Case Manager - Louie successfully completed Santa Barbara City College Alcohol & Drug Counseling Certificate Program in December 2013. Louie recently joined WillBridge staff through Santa Barbara's City College Work Study Program and is no stranger to WillBridge staff or residents. Louie completed his internship hours at WillBridge and was included in weekly staff meetings and trainings (CPR, Drug Testing & First Aid).

**7. If full funding is not available, what is the contingency plan for securing additional support and/or how can you modify your proposal?** If full funding is not available from the St. Francis Foundation, WillBridge will secure additional funding from newly cultivated foundations and other sources. WillBridge continues to renew existing grants and contracts with a considerable success rate and strives to identify and submit grants to new foundations. Consistency with the existing funding will guarantee ongoing current programs and new funding will allow for the expansion of existing programs or the implementation of new programs. Finally, WillBridge began a recycling program in May of 2013 and became a California State certified Community Service Recycling Program with CalRecycle Beverage & Container Program. The purpose of the program is Fourfold: (1) a catalyst to share the mission of WillBridge (2) help the agency become more financially self-sufficient (3) create jobs for WillBridge residents not able to return to a mainstream work environment (4) assist Santa Barbara to reach and maintain the 75% recycling goal set forth in California State ordinance July 2012: "AB 341."

## Board of Directors/Governing Body

[illegible]

How often does your governing body meet?

Board of Directors meet the fourth Thursday of each month



# The Foundation Roundtable: Common Grant Application

## Project Budget

**Note:** Check with each foundation to see if this form is required.

Organization Name: WillBridge of Santa Barbara, Inc.

Name of Project (if different): S/A

Budget dates for grant period: 1/1/2014 - 12/31/2014

### INCOME

*Possible categories: Government grants, foundation grants, individuals, business support, events, fees for service, etc.*

Source	Total Project (\$)	Pending (\$)	Secured (\$)	Notes
Contracts	85,783	57,344	28,439	ADMHS / SB Probation
Client Program Fees	125,552	90,970	34,582	SSI, SSDI, VA, Employment
Foundations & Trusts	43,000	25,000	18,250	
Government Grants	128,250	4,643	123,607	
Individuals	7,750	6,547	953	HUD /City CDBG / ESG / SPC
Special Events	14,350	10,395	3,955	
<b>TOTAL INCOME</b>	404.685	194.899	209,786	

List the In-Kind (non-cash) contributions: Direct Relief (hygiene products) - Clothing -

### EXPENSES

*Possible categories: Salaries, professional fees, rent and utilities, travel, publicity/outreach, events, capital items, etc.*

Item	Total Project (\$)	This Request (\$)	Notes
Compensation	180,000	12,000	Program Cor, Social Media Cor., Admin Assis
Contract Services	35,000		
Facility/Utilities/Ma	140,000		
Supplies	16,000	3,000	Office
Milage, Seminars	12,000		
Telephone	3,500		
Client Assistance	10,000	5,000	Scholarships for residents housing expenses
Marketing	1,250		
Postage	1,000		
Miscellaneous	10,935		
<b>TOTAL EXPENSES</b>	409.685	20,000	



# The Foundation Roundtable: Common Grant Application

## Organization Financial Summary

**Note:** Check with each foundation to see if this form is required.

Organization Name: WillBridge of Santa Barbara, Inc. Fiscal Year Dates: 1/1/2013 - 12/31/2013

### INCOME

Possible categories: Government grants, foundation grants, individuals, business support, events, fees for service, etc.

Source	Prior Year's Actual	Projected Annual Budget (\$)	YTD Actual (\$) as of [ 2/28/2014 ]
Contracts	85,783	85,783	12,209
Client Program Fees	125,552	125,552	21,572
Foundations & Trusts	28,500	43,000	2,917
Government Grants	128,250	128,500	23,769
Individuals	7,500	7,500	735
Special Events	14,277	14,350	1,997
<b>TOTAL INCOME</b>	389,862	404,685	63,199..

List the In-Kind (non-cash) contributions: \_\_\_\_\_

### EXPENSES

Possible categories: Salaries, professional fees, rent and utilities, travel, publicity/outreach, events, etc.

Item	Prior Year's Actual	Annual Budget (\$)	YTD Actual (\$) as of [ 2/28/2014 ]
Compensation	197,573	180,000	29,366
Contract Services	21,335	23,000	7,085
Facility/Utilities/Maintenance	125,366	130,000	21,909
Supplies	11,435	14,435	365
Mileage & Training	7,258	9,000	890
Telephone	1,046	2,500	147
Client Assitance	1,926	2,000	37
Insurance	30,398	32,000	4,173
Marketing	777	1,000	40
Postage	447	750	602
Miscellaneous	4,803	10,000	1,868
<b>TOTAL EXPENSE</b>	402,364	404,685	66,482
<b>NET PROFIT OR LOSS</b>	12,502		

Total Capital Expenses	0	0	0
------------------------	---	---	---

i.e., computers, vehicles, building improvements, etc.:

Notes:

The Foundation Roundtable: Common Grant Application

**Organization Balance Sheet Summary**

**Note:** Check with each foundation to see if this form is required.

<b>ASSETS</b>	<b>MOST CURRENT (\$)</b> as of [ 2/28/2014 ]	<b>PRIOR YEAR CLOSE (\$)</b>
<b>Current Assets</b>		
Cash and Equivalents		
Accounts Receivable	10,488	6,930
Prepaid Expenses	9,454	6,955
Inventory		
Grants/Pledges Receivable	97,587	47,214
Other	7,805	7,805
<b>Fixed Assets (Net)</b>		
Property		
Buildings		
Equipment	5,710	5,710
<b>Investments</b>		
Endowments		
Other		
<b>TOTAL ASSETS</b>	131,044	74,614
<b>LIABILITIES</b>		
<b>Current Liabilities</b>		
Accounts Payable	51,953	36,824
Accrued Expenses	3,758	
Long Term Debt (Current Portion)	74,696	32,435
Short Term Debt	637	637
Other		
<b>Long Term Debt (over a year)</b>		
Loan		
Other		
<b>TOTAL LIABILITIES</b>		
<b>Net Assets</b>		
Unrestricted		4,718
Temporarily Restricted		
Permanently Restricted		
<b>TOTAL LIABILITIES AND NET ASSETS</b>	131,044	74,614



INTERNAL REVENUE SERVICE  
P. O. BOX 2508  
CINCINNATI, OH 45201

DEPARTMENT OF THE TREASURY

**MAY 07 2009**

Date:

WILLBRIDGE OF SANTA BARBARA INC  
PO BOX 23833  
SANTA BARBARA, CA 93121

Employer Identification Number:  
57-1194195

DLN:

17053115732089

Contact Person:

EDWARD S SCHLAACK

ID# 31536

Contact Telephone Number:

(877) 829-5500

Public Charity Status:

170(b)(1)(A)(vi)

Dear Applicant:

Our letter dated December 2004, stated you would be exempt from Federal income tax under section 501(c)(3) of the Internal Revenue Code, and you would be treated as a public charity, rather than as a private foundation, during an advance ruling period.

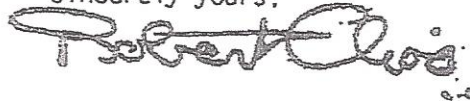
Based on the information you submitted, you are classified as a public charity under the Code section listed in the heading of this letter. Since your exempt status was not under consideration, you continue to be classified as an organization exempt from Federal income tax under section 501(c)(3) of the Code.

Publication 557, Tax-Exempt Status for Your Organization, provides detailed information about your rights and responsibilities as an exempt organization. You may request a copy by calling the toll-free number for forms, (800) 829-3676. Information is also available on our Internet Web Site at [www.irs.gov](http://www.irs.gov).

If you have general questions about exempt organizations, please call our toll-free number shown in the heading.

Please keep this letter in your permanent records.

Sincerely yours,



Robert Choi  
Director, Exempt Organizations  
Rulings and Agreements

Letter 1050 (DO/CG)





# House of Miracles

Volume 7—issue 1

January

## Christmas at WillBridge

As the holiday season approached excitement filled the air as the residents were anticipating Santa's visit. Residents sent their Christmas wish list to Santa in great expectations. As you entered each home you were met with the smell of fresh pine, baked cookies, pies, banana nut bread and gingerbread. The furniture was rearranged in preparation of the Christmas tree. The residents decorated their home and tree to the sounds of holiday music while lights danced off the walls. The closer it got to Christmas the more excited they become waiting for Santa's visit. Christmas morning the residents found beautifully wrapped gifts in their Santa bags. Laughter and tears of joy were expressed and all were in awe that they mattered to someone who did not even know them. Many of the residents are

estranged from their families and have not celebrated Christmas in years. The oohs, ahs and smiles were priceless.



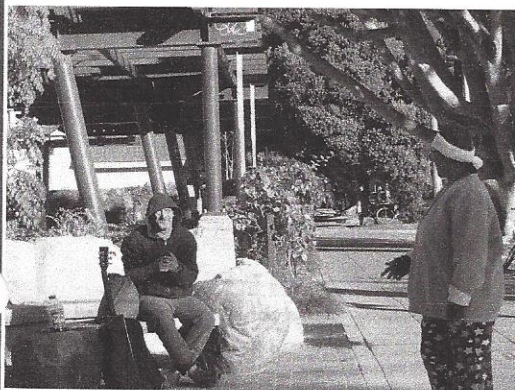
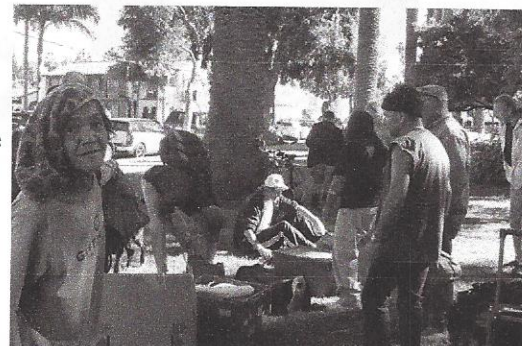
**Each resident has expressed their sincere gratitude for your thoughtfulness. WillBridge staff and board members would also like to thank everyone who helped to make Christmas special in every way.**



## Street Outreach

On Christmas Eve several WillBridge staff and residents visited the *154 underpass, Eastside Post Office, Sunflower Park, Alameda Park, Pershing Park and Isla Vista* handing out holiday gift bags filled with personal hygiene cosmetics. Each person was also given the items of their choice (hat, scarf, gloves, socks, jacket, clothing and sneakers or boots). This outreach was possible due to the generous donations of clothing WillBridge received from community members and the hygiene products from Direct Relief. Thank you for your continued support helping us reach those less fortunate. Your caring, compassion and kindness has touched many lives.

In 2013 WillBridge Street Outreach Program had 2,176 contacts with homeless individuals of which 243 were new homeless friends. Together we are keeping  
*Hope Alive.*



2904 State Street, Suite A , Santa Barbara, CA 93105 \* Office (805) 564-1911 \* Fax (805)-564-1933

Recycle & Donations: 805-570-0931

Email: [opportunity@willbridge.sbcoxmail.com](mailto:opportunity@willbridge.sbcoxmail.com) \* [www.willbridgesb.org](http://www.willbridgesb.org)



# WillBridge Recycling Program

May of 2013 WillBridge launched *WillBridge Recycling Program*. It is an exciting new venture with unlimited possibilities as a program for the agency. The goal of the program is four-fold: (1) a catalyst to share the mission of WillBridge (2) help the agency become more financially self sufficient (3) create jobs for WillBridge residents not able to return to a mainstream work environment (4) assist Santa Barbara to reach and maintain the 75% recycling goal set forth in AB 341, the California State ordinance approved in July 2012.

*WillBridge Recycling Program* would like to acknowledge participation from our local partners (Stacky's Seaside Café, U-Haul, Oltman's Construction, Holy Cross Church, Casa Blanca Apartments, St. Mark United Methodist Church, Jay's Mobile) and individual community members currently supporting our recycling program.

*WillBridge Recycling Program* provides trash bins and bags for your convenience, the option to schedule a free pick up or you can drop off your recycle. Our recycle team is available to work events i.e. festivals, concerts, parties, etc.

## Your Tax Deductible Recycling Donation Houses the Homeless

- ♦ **Conserve Resources**
- ♦ **Prevent Pollution**
- ♦ **Protect the Environment**



**Recycling** is the process of separating, collecting and remanufacturing or converting used or waste products that has already served its initial purpose by reproducing something that is useable.

### *Here are a few basic reasons why recycling is important*

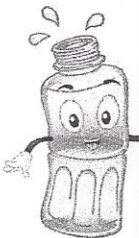
**Recycling Saves the Earth** Recycling different products will help the environment (paper comes from trees by recycling paper we can help lessen the number of trees that are cut down).

**Recycling Saves Energy** It takes less energy to process recycled materials than to process virgin materials - saving energy decreases pollution and this creates less stress on own health and our economy.

**Recycling Helps Mitigate Global Warming and Reduce Pollution** energy is saved in industrial production through recycling, the greenhouse gas emissions from factories and industrial plants are lessened and the use of fuels that emit harmful gasses during production is also minimized - it reduces air pollution and greenhouse gasses that depletes the ozone layer.

**Recycling Reduces Waste Products in Landfills** landfills are mostly composed of non-biodegradable waste which takes a long time to decompose. By recycling, we can lessen the waste materials that are placed into landfills.

### **LIFE RECYCLING™**



### **Sponsor-a-Barrel**

For a \$100 tax deductible donation you can have a plaque engraved with your inscription, up to 45 characters, and attached to a recycle container placed in one of the Santa Barbara County Parks.

Complete the enclosed form

### **2013 Recycle Volume**

**Aluminum\*\*\*\*\* 737.25lbs**  
**Plastic\*\*\*\*\*1,173.95lbs**  
**Glass (CRV)\*\*\*\*\*7,811.15lbs**

2904 State Street, Suite A , Santa Barbara, CA 93105 \* Office (805) 564-1911 \* Fax (805)-564-1933

Recycle & Donations: 805-570-0931

Email: [opportunity@willbridge.sbcoxmail.com](mailto:opportunity@willbridge.sbcoxmail.com) \* [www.willbridgesb.org](http://www.willbridgesb.org)